

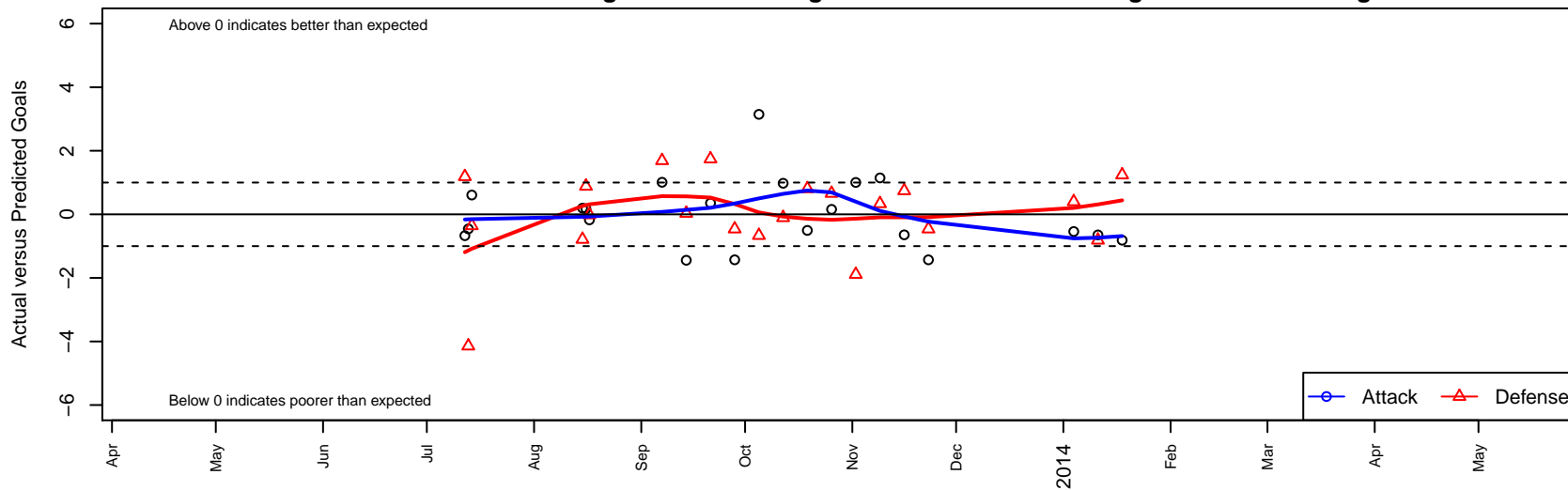
Seattle United NE White B01

Seattle United Regional
 Seattle, WA
 B01 total strength=444
 attack=0.34 defense=0.25
 fall league = NPSL B12D3
 alt names used:
 Seattle United NE White [B01]
 SEATTLE UNITED SU B01 NE WHITE (WA)
 Seattle United NE B01 White
 2013 Seattle United NE B01 White

Venues played:
 Seattle Cup BU12
 Bigfoot Silver U12
 NPSL B12D3
 Founders Cup B01



Seattle United NE White B01
 Dots are actual minus expected GF (blue circles) and GA (red triangles).
 Blue line is smoothed change in attack strength. Red is smoothed change in defense strength.



	date	home		away		venue	pred.home	pred.away
21314	2014-01-18	Seattle United NE White B01	0	Crossfire Select Nakamura B01	2	Founders Cup B01	0.81	3.24
21107	2014-01-11	3 Rivers Yakima Borges B01	7	Seattle United NE White B01	0	Founders Cup B01	6.19	0.65
20901	2014-01-04	Seattle United NE White B01	0	Tacoma United San Martin B01	6	Founders Cup B01	0.54	6.40
19088	2013-11-23	FC Everett B01	2	Seattle United NE White B01	0	NPSL B12D3	1.54	1.43
18426	2013-11-16	Seattle United NE White B01	1	Mukilteo Strikers B01	3	NPSL B12D3	1.65	3.74
17682	2013-11-09	ISC Arsenal White B01	0	Seattle United NE White B01	4	NPSL B12D3	0.33	2.85
16690	2013-11-02	Seattle United W White B01	4	Seattle United NE White B01	2	NPSL B12D3	2.11	1.00
15797	2013-10-26	Seattle United NE White B01	2	ISC Arsenal Red B01	0	NPSL B12D3	1.84	0.66
14877	2013-10-19	Seattle United NE White B01	1	Lake Hills Legends B01	1	NPSL B12D3	1.51	1.80
13817	2013-10-12	Seattle United S White B01	1	Seattle United NE White B01	3	NPSL B12D3	0.89	2.02
12797	2013-10-05	Seattle United NE White B01	6	ISC Arsenal White B01	1	NPSL B12D3	2.85	0.33
11854	2013-09-28	Seattle United NE White B01	0	FC Everett B01	2	NPSL B12D3	1.43	1.54
10907	2013-09-21	Mukilteo Strikers B01	2	Seattle United NE White B01	2	NPSL B12D3	3.74	1.65
9930	2013-09-14	Newport FC Dragons B01	1	Seattle United NE White B01	0	NPSL B12D3	1.03	1.45
8988	2013-09-07	Seattle United NE White B01	3	Crossfire Select Perry B01	0	NPSL B12D3	1.99	1.69
7005	2013-08-17	FC Alliance B B01	2	Seattle United NE White B01	1	Bigfoot Silver U12	1.98	1.17
6765	2013-08-16	MYSC Force B01	1	Seattle United NE White B01	1	Bigfoot Silver U12	1.88	0.83
6666	2013-08-15	NSC Thunder B01	4	Seattle United NE White B01	1	Bigfoot Silver U12	3.21	0.80
3184	2013-07-14	Seattle United NE White B01	1	Seattle United S Black B01	9	Seattle Cup BU12	0.39	8.64
2944	2013-07-13	Seattle United NE White B01	1	NSC Vortex B01	6	Seattle Cup BU12	1.46	1.86
2747	2013-07-12	Mercer Island FC Heat B01	2	Seattle United NE White B01	0	Seattle Cup BU12	3.19	0.67